

ROOM 11 2022 PRESENTS

'HAMILTON EAST SCHOOL

THE PAST, PRESENT AND FUTURE IN PICTURES'

---

WITH SPECIAL MOVIE FEATURE

'THE HISTORY OF TE ARA O TE NGAHERE' BY

LEVI DRIVER

WELCOME TO ROOM 11'S TRIP DOWN MEMORY LANE AND INTO THE UNKNOWN...

WE HAVE BEEN EXPLORING HOW THE SCHOOL ENVIRONMENT HAS CHANGED OVER THE LAST 150 YEARS, AND HOW IT COULD CHANGE IN THE NEXT 150 YEARS.

WE ASKED: WHAT HAS STAYED THE SAME, AND WHAT HAS CHANGED?

WE TALKED ABOUT WHAT SCHOOL WAS LIKE IN THE PAST, THEN CHOSE PHOTOS TO SHOW THE SIMILARITIES AND DIFFERENCES.

2022 PHOTOS AND WORDS BY ROOM 11







***Tū Tangata! Tū Māia!***  
***Stand tall, Reach High***



PAST



PRESENT



THIS IS THE CROSSING IN FRONT OF THE SCHOOL. YOU CAN SEE THE SCHOOL SIGN AND LOGO HAS CHANGED AND THERE ARE LOTS MORE PLANTS AND BUSHES. WE ALSO HAVE ROAD PATROLLERS NOW.



PAST



PRESENT



THIS IS IN FRONT OF ROOM 4, IT STILL LOOKS REALLY SIMILAR EXCEPT FOR THE FRONT GATE, BUT WE LOOK REALLY DIFFERENT, WE THINK THEY ARE WEARING SCHOOL UNIFORM, BUT WE DON'T.

THE TREES ON DAWSON, WHICH HAS JUST BEEN RENAMED TE WEHENGA LOOK LIKE THEY HAVE REALLY GROWN, BUT WE THINK MAYBE NEW ONES WERE PLANTED.



PAST

PRESENT



OUR FRONT ENTRANCE AND OFFICE, IT LOOKS MUCH SMARTER NOW, WITH OUR SCHOOL LOGO, DIFFERENT SHAPED FENCE AND WITHOUT THE OVERHANGING TREE.



## PAST

Headmaster  
McCurties. Early 1940s  
Lining up for lunch



## PRESENT



BEHIND ROOM 4, THIS HASN'T CHANGED MUCH FROM THE 1940'S TO THE 2020'S, AROUND 80 YEARS, BUT THE PEOPLE DRESS VERY DIFFERENTLY, AND YOU CAN SEE SOME OF US ARE WEARING MASKS TODAY!

THE CHILDREN HERE ARE LINING UP FOR LUNCH, WHICH MUST HAVE BEEN PROVIDED BY THE SCHOOL. WE BRING OUR OWN LUNCHES TODAY, WE THINK IT WOULD BE A GOOD IDEA IF ALL SCHOOLS GOT LUNCHES.

IN OUR PHOTO THERE IS A LOT OF LOST PROPERTY, WE WONDERED IF THEY HAD LOST PROPERTY IN THE OLDEN DAYS...



PAST



PRESENT



THIS IS THE KAURI TREE OUTSIDE THE OFFICE, THE ORIGINAL PHOTO IS OF TWO STUDENTS PLANTING THE KAURI TREE WITH THE PRINCIPAL WATCHING ON. THE MOST NOTICEABLE DIFFERENCE IS THE SIZE OF THE TREE NOW! ALSO THE BUSH IN THE BACKGROUND HAS BEEN PRUNED.



PAST



PRESENT



THIS PHOTO IS ON TOP OF THE HILL FACING DOWN TO THE HALL. THE HALL ROOF NOW HAS SOLAR PANELS TO HEAT THE POOL, THERE IS NOW A SHADE SAIL, AND A ROOF OVER THE DOOR WAY. THE FENCE AND HEDGE IS GONE TOO. WE CHOSE THIS PHOTO BECAUSE WE LOVE TO DO KAPA HAKA HERE



PAST



PRESENT



THIS PHOTO IS OF THE COURTS, WHEN THEY WERE FIRST MADE AND NOW. THERE HAVE BEEN DIFFERENT PLAYGROUNDS PUT IN SINCE THE AREA WAS FIRST MADE, YOU CAN STILL SEE THE HOUSE IN THE BACKGROUND



PAST



PRESENT



THIS IS THE TOP COURTS FACING THE JUNIOR BLOCK. THE TREES HAVE GROWN SO MUCH AND THE PLAYGROUND HAS BEEN UPDATED, BUT THERE ARE STILL THE COURT LINES PAINTED AND YOU CAN SEE THE SANDPIT IN THE BACKGROUND.



PAST



PRESENT



HERE ON THE LEFT IS THE ORIGINAL PHOTO, AND THEN ON THE RIGHT IS A REMAKE OF THE ORIGINAL. THE BIGGEST DIFFERENCE IS THAT THE BUILDINGS HAVE MOVED...IN THE OLD PHOTO IT LOOKS LIKE ROOM 5 AT THE TOP RIGHT BUT ROOMS 1,2 AND 3 NEXT TO IT...WE WORKED OUT ROOM 5 MUST HAVE BEEN MOVED. WE STILL LIKE READING!!



PAST



PRESENT



THIS PHOTO IS OF ROOM 7 (WHEN IT WAS BEING BUILT) WITH ROOM 5 ON THE RIGHT AND THE LIBRARY AND ROOM 12 IN THE BACKGROUND. TODAY ROOM 7 IS ABOUT TO BE REMOVED TO MAKE SPACE FOR SOME NEW CLASSROOMS! BUT THE REST IS VERY SIMILAR



PAST



PRESENT



LOOKING UP FROM BY THE POOL, THE FENCE HAS CHANGED, THERE IS NO LONGER A HEDGE LIKE THAT, WE NOW HAVE A SUN SHADE AND THE TREES ARE MUCH BIGGER.



PAST



PRESENT



THIS PHOTO IS THE WALL OF THE CHANGING ROOM, THE PAINTING HAS NOW BEEN COVERED. THE BRICKS HAVE STAYED THE SAME. WE CHOSE THIS PHOTO BECAUSE THE PAINTING IS COOL. MAYBE IT SHOULD BE PAINTED AGAIN...?



PAST



PRESENT



THIS PHOTO SHOWS HOW THE POOL WALLS USED TO BE PAINTED AND HOW IT LOOKS NOW. SOME OF US THINK THE DUCKS SHOULD BE REPAINTED, THE REST OF US PREFER THE FISH PAINTING. WHAT DO YOU THINK?



PAST



PRESENT



THIS IS TAKEN OUTSIDE THE HALL LOOKING UP OVER THE POOL. WE NOTICED SOME OF THE TREES HAVE GONE AND A WHOLE BUILDING HAS DISAPPEARED. ALSO WE THINK IT USED TO BE A PLAY AREA WITH GRASS.



PAST



PRESENT



THIS PHOTO WAS TITLED 'READING CORNER'. WE HAD TO GUESS WHERE IT WAS BECAUSE WE COULDN'T FIGURE IT OUT. WE THOUGHT THE SEATING LOOKED GOOD AND IT LOOKED A NICE PLACE TO READ.



PAST



PRESENT



THIS IS THE NATURE TRAIL, WE REALLY LIKE THE NATURE TRAIL, IT'S SO NICE. THERE ARE A FEW DIFFERENT TREES WITH STEPS AND SLOPES, BUT ITS RELATIVELY THE SAME. ONE DIFFERENCE IT IS NOW CALLED TE ARA O TE NGAHERE.



PAST



PRESENT



THIS IS THE CORNER OF PUTIKITIKI FIELD, WHICH USED TO BE CALLED BOTTOM FLAT. THE HOUSE IS NOW A DIFFERENT COLOUR AND A DIFFERENT STYLE, AND THE FENCE IS DIFFERENT. THE TREES HAVE CHANGED. WE STILL SKIP AND PEOPLE STILL PLAY HERE.



PAST



PRESENT



THIS IS BY THE PLAYGROUND ON PUTIKITIKI FIELD, THERE ARE LOTS MORE TREES NOW, YOU CAN SEE HOW BIG THE TREES HAVE GOT COMPARED TO THE WOODEN CLIMBING FRAME. YOU CAN'T SEE THE HOUSE NOW, ON SPORTS DAY AND WHANAU SPORTS WE STILL PLAY TUG OF WAR.



LEVI HAS A SPECIAL INTEREST  
IN TE ARA O TE NGAHERE,  
FORMERLY KNOWN AS 'THE  
NATURE TRAIL'.

HE RESEARCHED ITS HISTORY  
AND HOW ENVIRO AGENT  
GROUPS HAVE HELPED DEVELOP  
IT, AND HE MADE THIS  
FANTASTIC DOCUMENTARY.



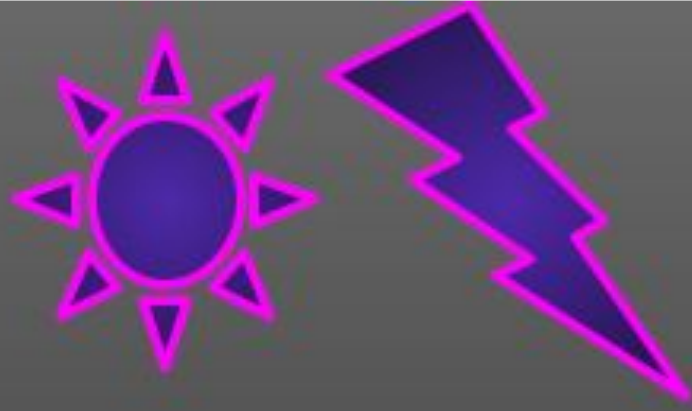


## LOOKING TO THE FUTURE...

NEXT ROOM 11 IMAGINED WHAT THE SCHOOL ENVIRONMENT MIGHT LOOK LIKE IN 150 YEARS TIME, THEY DESIGNED FUTURE SCHOOLS AND PRESENTED THEM EITHER DIGITALLY, AS A DRAWING OR AS A MODEL.

NEXT STOP 2172...





# Future schools



Have you ever wished to have a flying school bus? Well you can have a flying bus that's super fast.

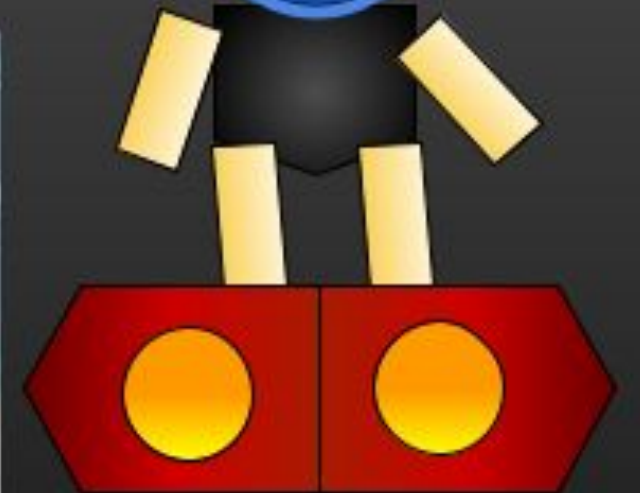


In the future instead of computers and chromebooks, they will have holograms they can swipe through with their finger.

In the future instead of normal bikes and scooters we will have hoverboards to go to school on if your going in a car.



Instead of missing the olden days you can have a time travel machine, And with your time travel machine you can go back in time and study dinosaurs and other extinct animals and then tell your friends and you can make them learn something about the extinct animals.





## Learning styles.

In the future when a student is absent, they can attend a zoom call (or whatever app they use in the future). There will be specific zoom groups you attend for each learning category. If the teacher is absent because they are sick, they will be on zoom. If the teacher is fine but they are not at school because of another family member they will set up their camera and show up in the classroom as a hologram, (optional to attend as a hologram). The assistant teacher will supervise the children even though the teacher is digitally there.

## RILEY'S IDEAS ABOUT HOW FUTURE SCHOOLS WILL WORK



# The Future of schools...

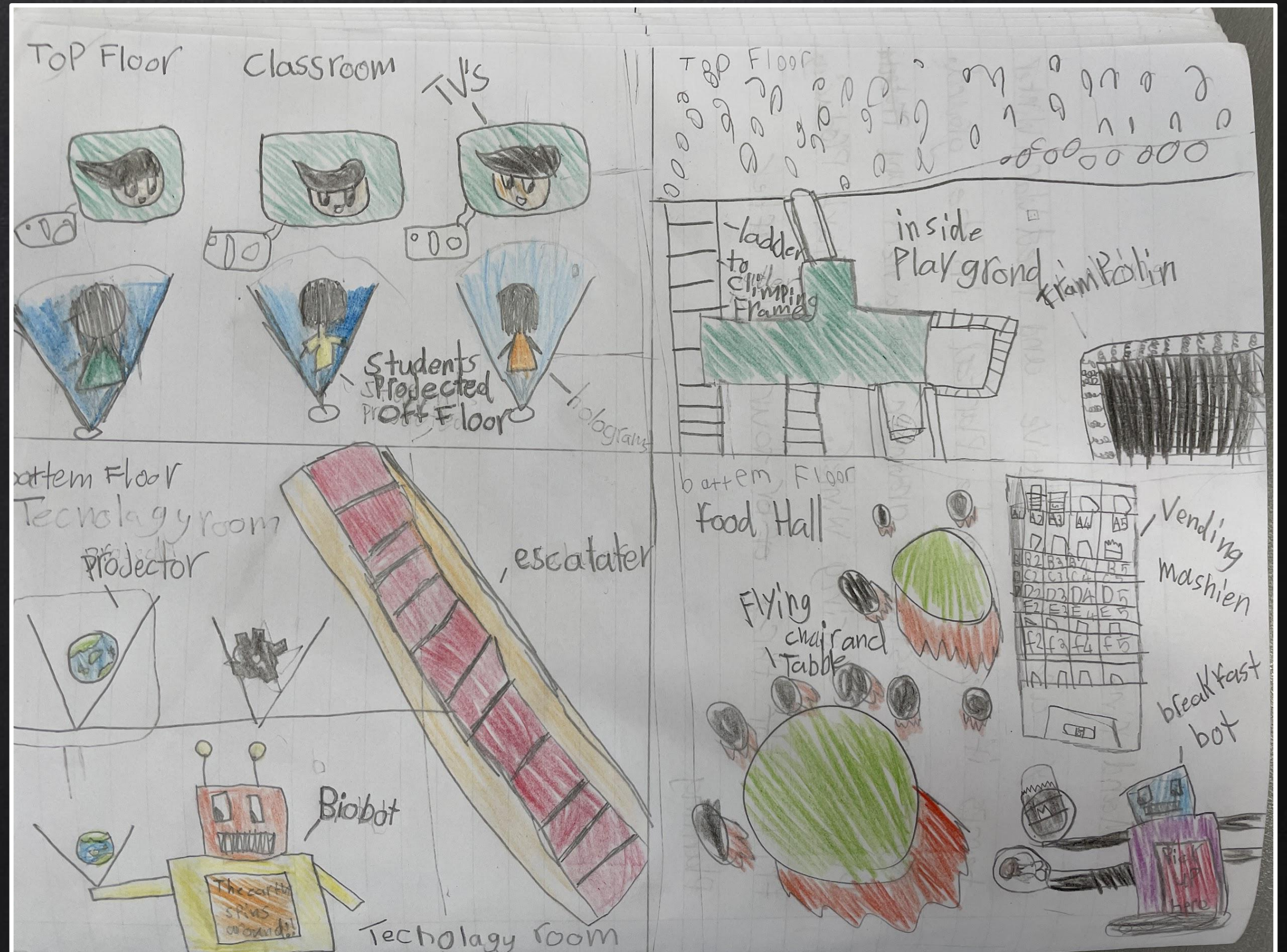


## Future Devices.

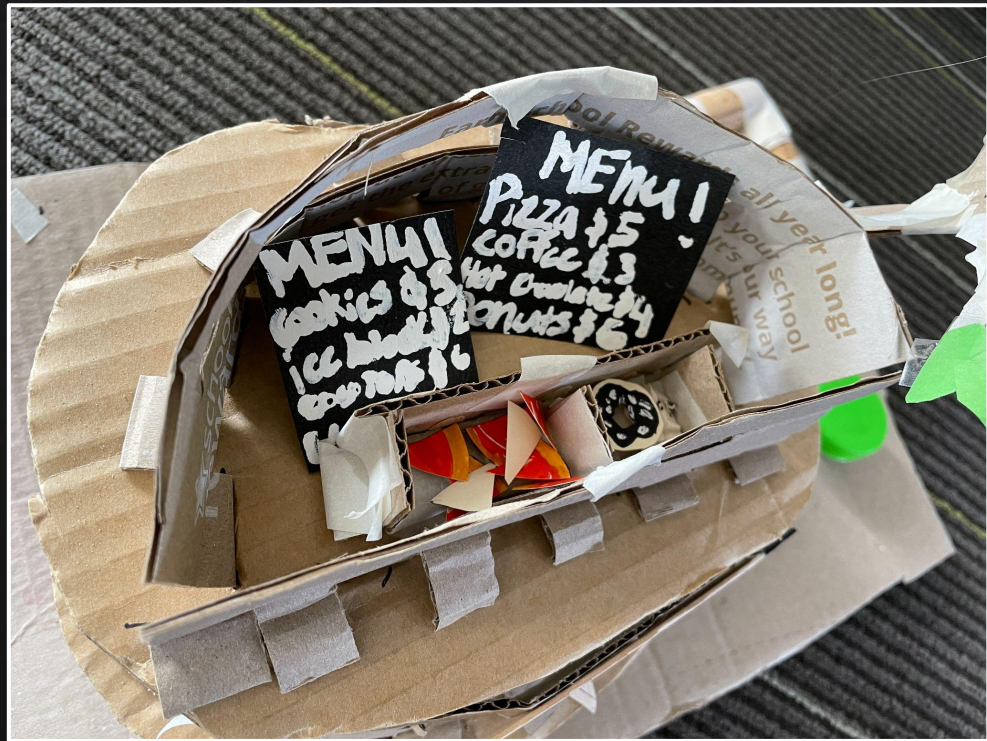
Each student will have their own personal holographic iPad for school work and library use. The holographic iPad will not have an app store so that the students can't download any games to disrupt their learning time. The only apps on the holographic iPad are the libraries reading apps and learning apps for the classroom. They can take home their holographic iPad but they can only be used for reading of school work.



# ISABEL'S DESIGN OF A FUTURE SCHOOL

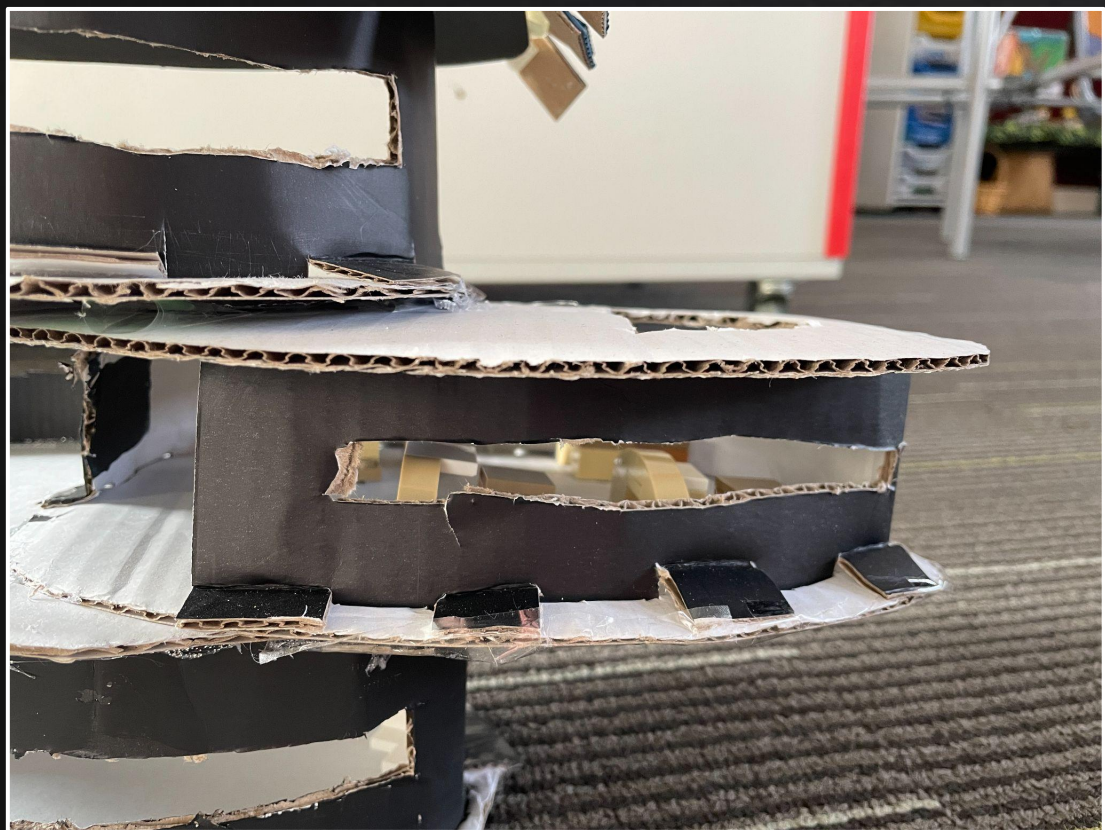
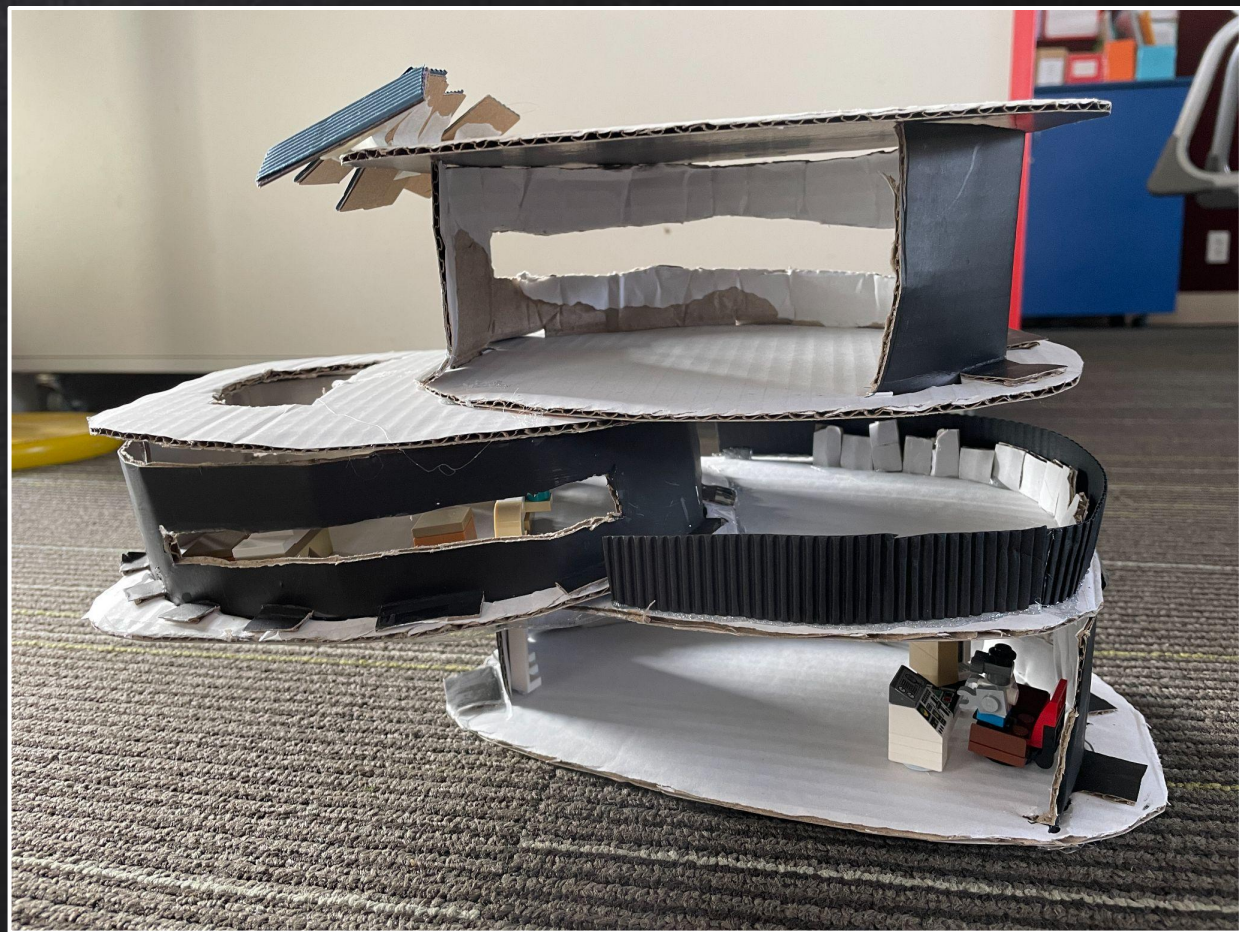
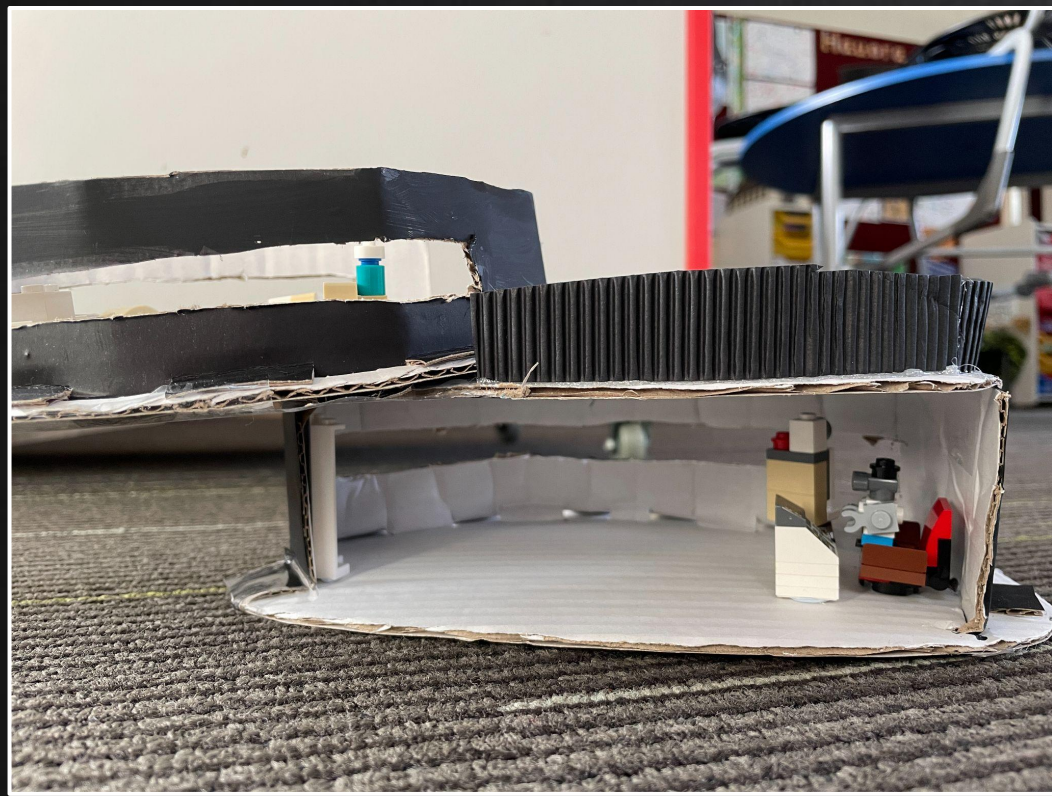






ZOE'S MODEL OF A FUTURE SCHOOL

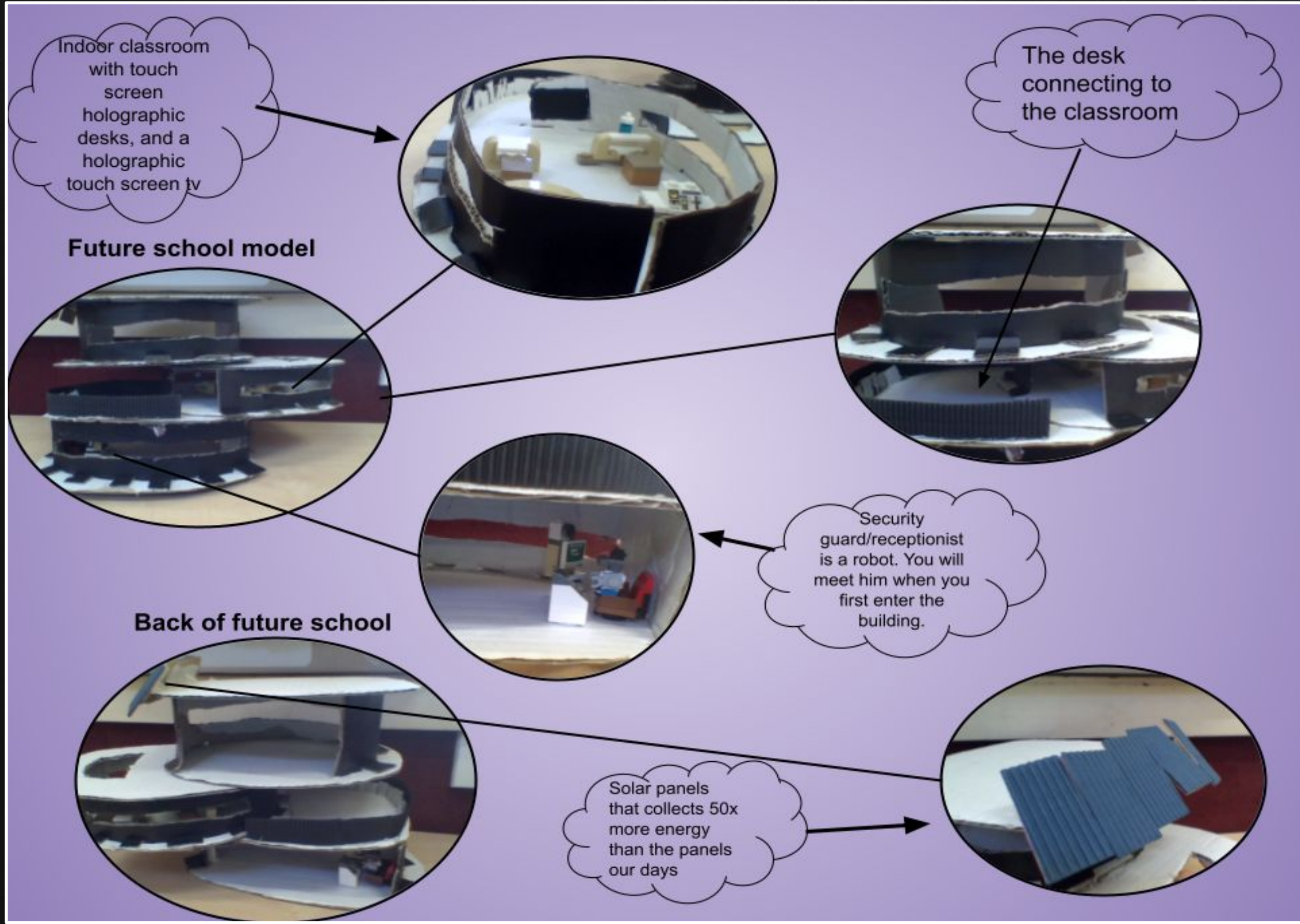




KIERA'S MODEL OF A FUTURE SCHOOL



# KIERA'S FUTURE SCHOOL EXPLAINED







THE GREEN BIT IS A SCANNER TO MAKE SURE KIDS ARE DOING THEIR WORK AND THE WHITE THING IN THE CORNER IS A SPEAKER IN CASE THERE IS AN EMERGENCY. AND THE STAIRS LEAD UPSTAIRS.

EDWARD



THERE IS A FLYING PLANE/BUS IT'S PARKING IN HAMILTON EAST SCHOOL, AND THERE IS HAMILTON EAST SCHOOL RIGHT THERE, AND THERE IS A ROAD. FAREED

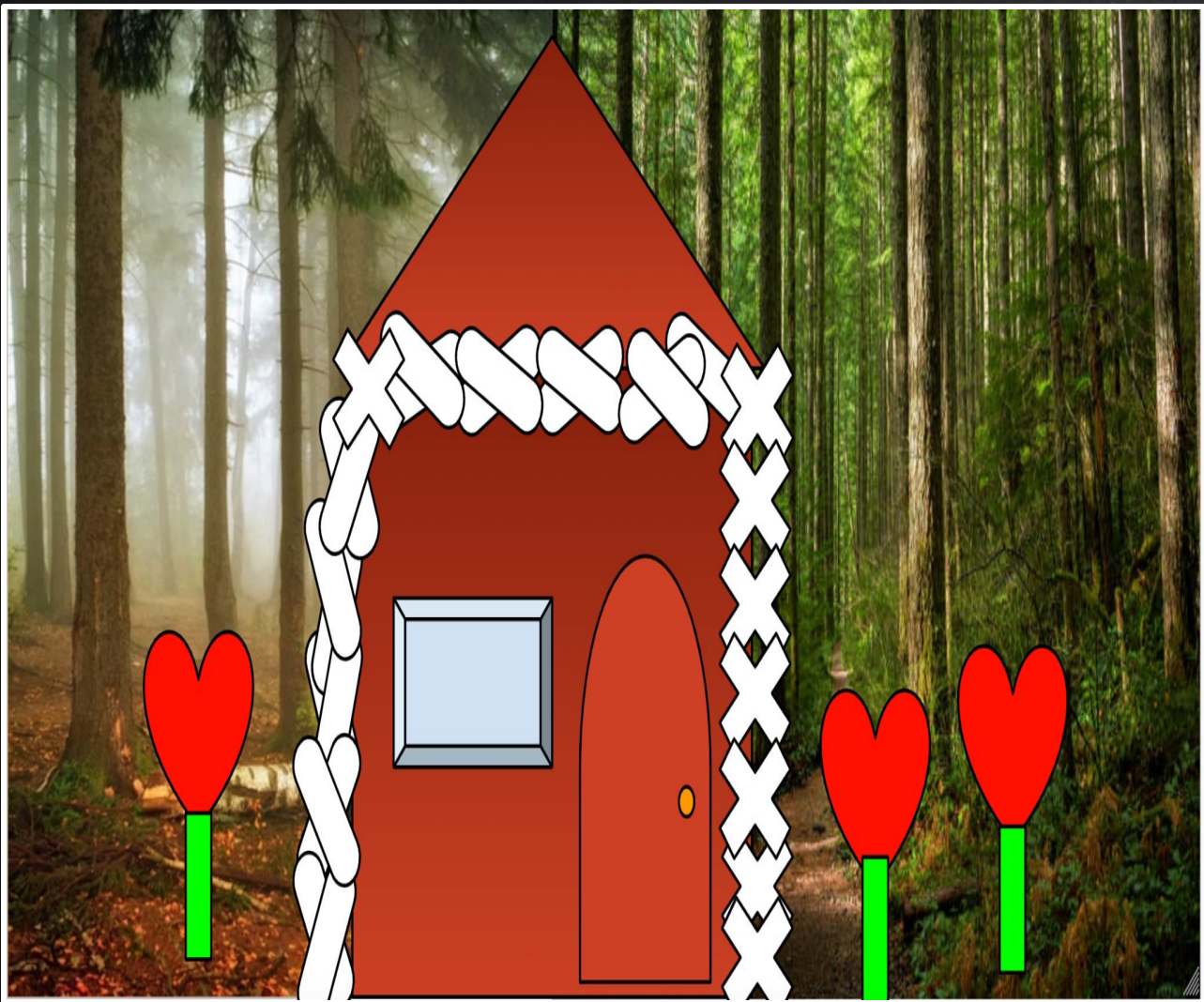


Future bus

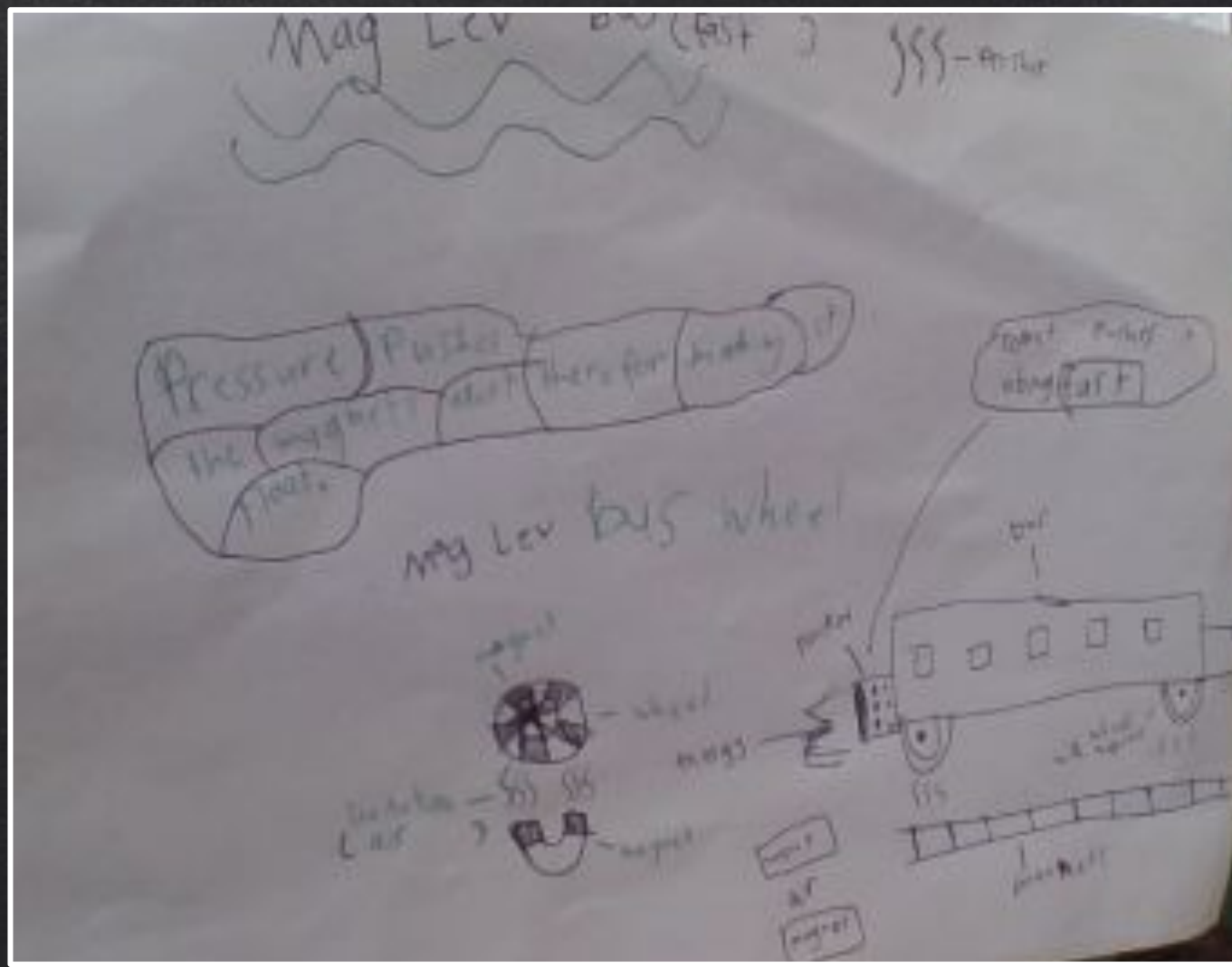
Future class room

FUTURE BUS AND FUTURE CLASSROOM IDEAS BY MUJTABA





NAOMI IMAGINED A FUTURE SCHOOL  
MADE OF GINGERBREAD



THIS IS MY SOLAR MAGNET BUS.  
TWO MAGNETS PUSH OFF EACH  
OTHER, IT SEEMS LIKE IT'S  
LEVITATING  
OPAL



THIS IS HOW KAIORA  
IMAGINES THE FUTURE  
CLASSROOM WILL LOOK





THIS IS MY FUTURE SCHOOL BUS. IT IS A MOUNTAIN GORILLA PLUS A SCHOOL BUS. THEY USE THEM TO TRAVEL ACROSS THE HEAVY TERRAIN AND MOUNTAINS AND IT RUNS ON BANANAS.

ALEX



THIS IS MY FUTURE CLASSROOM, I WANT TO CALL IT THE FLOWER DOME BECAUSE IT'S THE SHAPE OF A FLOWER. EACH LITTLE ROOM IS ITS OWN EDUCATION. THERE IS A COOKING ROOM, A READING ROOM, A ART ROOM, A TEACHERS OFFICE, A ENGINEERING ROOM, A SCIENCE ROOM, A WRITING ROOM, AND A MATH ROOM. BLAKE



THIS IS CORLEEN'S DESIGN OF WHAT A FUTURE SCHOOL WOULD LOOK LIKE.



THANK YOU FOR COMING ON A TRIP THROUGH TIME WITH US TO CELEBRATE 150 YEARS OF HAMILTON EAST SCHOOL.

ROOM 11 2022

ALEX	JASHNEEL	NAOMI
ANWAR	JARED	OPAL
BLAKE	KAIORA	REIJELI
CORLEEN	KIERA	RILEY
DEZARIAH	KONA	TED
EDWARD	LEVI	VIENNA-LEE
ELIZA	LUCIAN	WILLIAM
EMMA	MADDISON	ZOE
FAREED	MASON	
HONOR	MAX	EDIE
ISABEL	MUJTABA	JAN